

Die Abbildungsnummern dienen als Referenz und sind nicht durchlaufend.

Abbildung 1

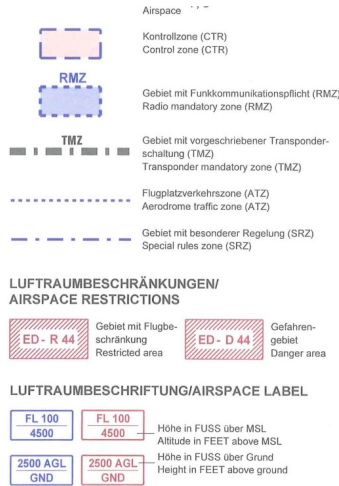


Abbildung 4

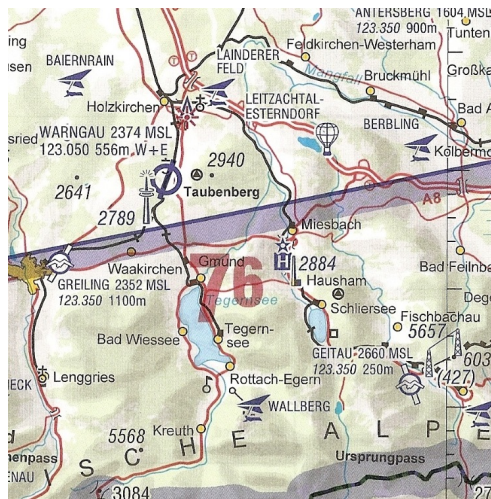


Abbildung 6



Abbildung 7

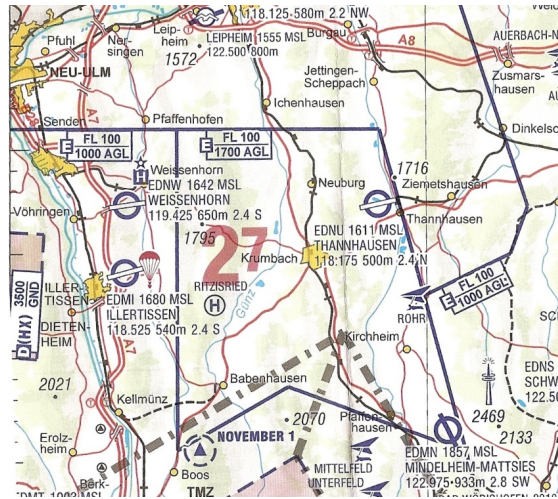


Abbildung 9

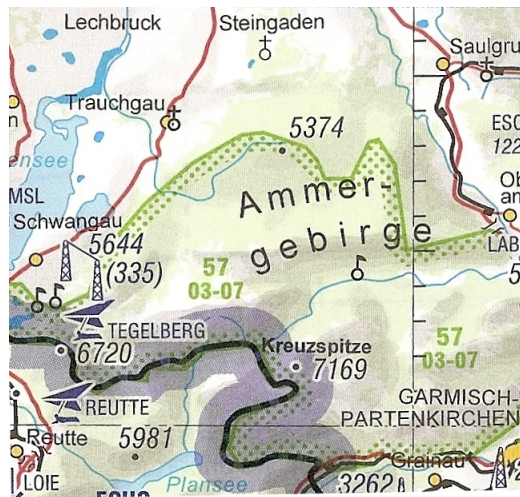


Abbildung 10

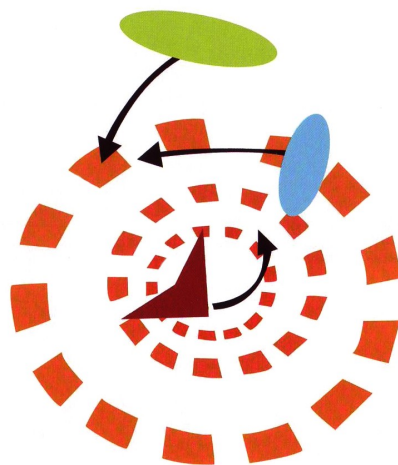


Abbildung 11

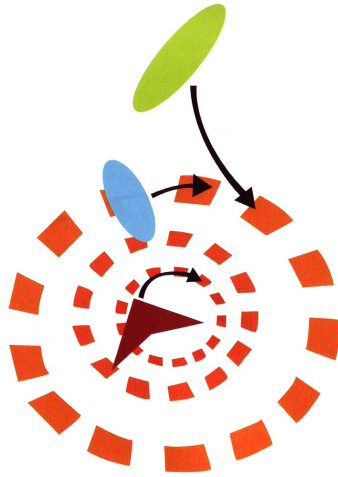


Abbildung 12

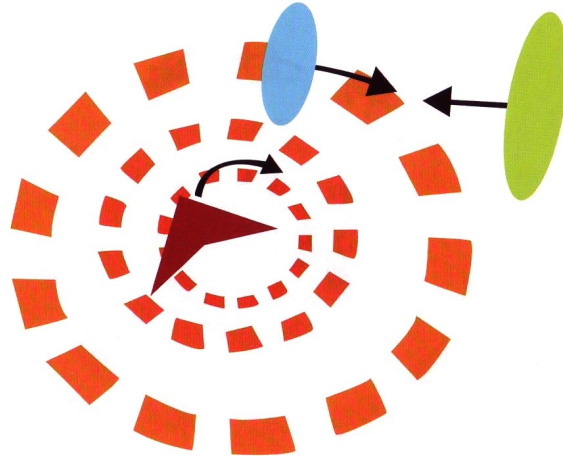


Abbildung 13



Abbildung 14



Abbildung 15



Abbildung 16

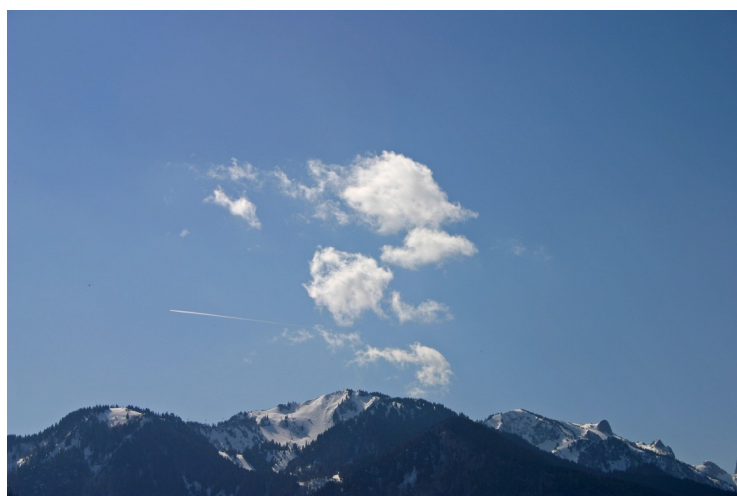


Abbildung 17



Abbildung 18



Abbildung 19



Abbildung 20



Abbildung 21

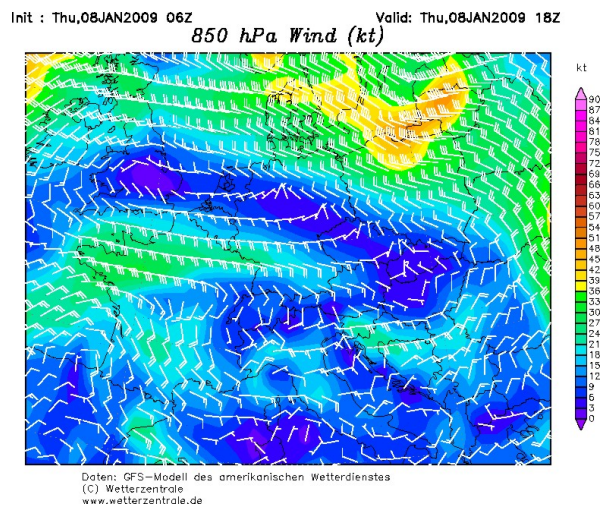


Abbildung 22

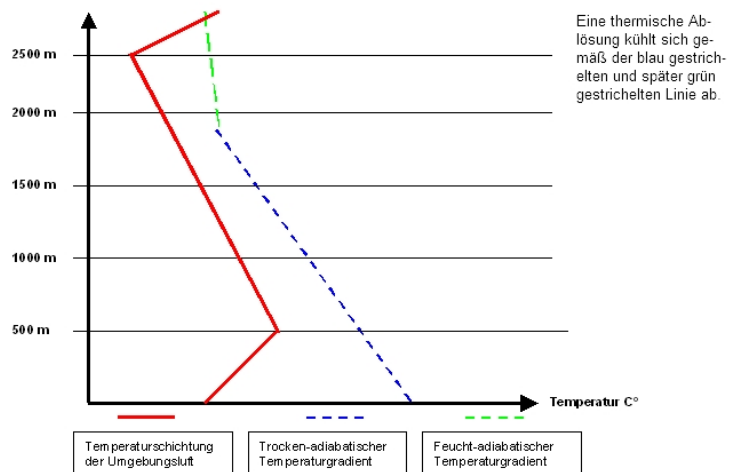


Abbildung 23

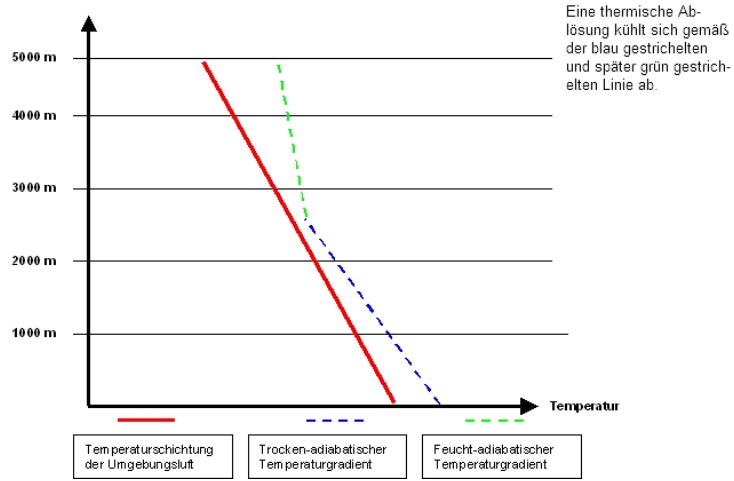


Abbildung 24

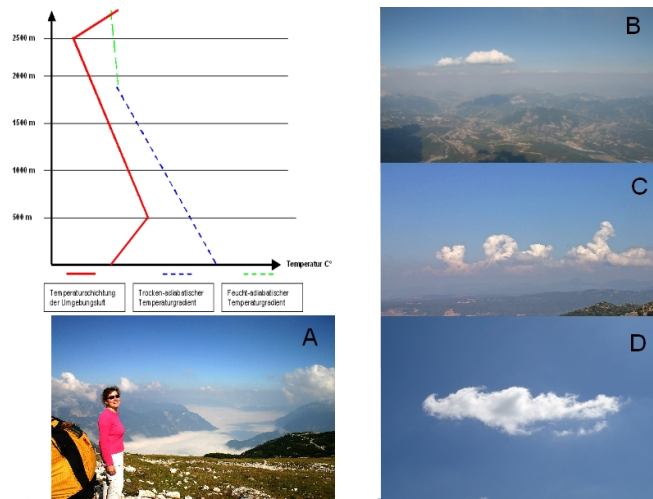


Abbildung 25

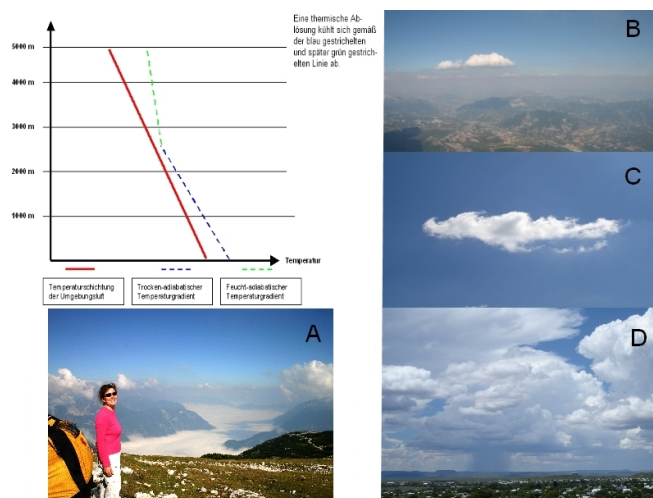


Abbildung 26

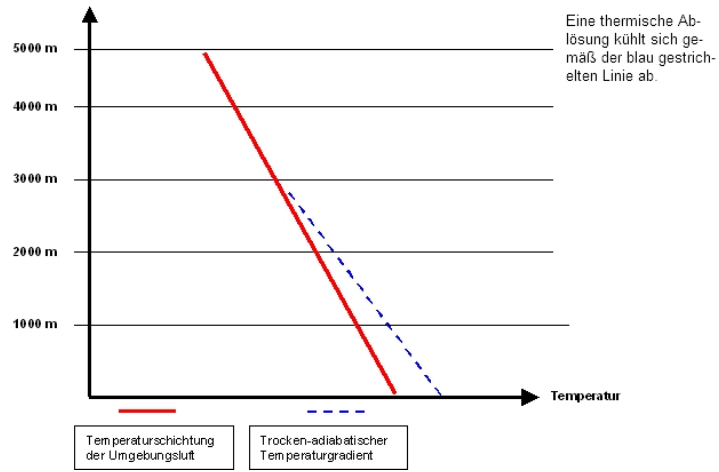


Abbildung 27

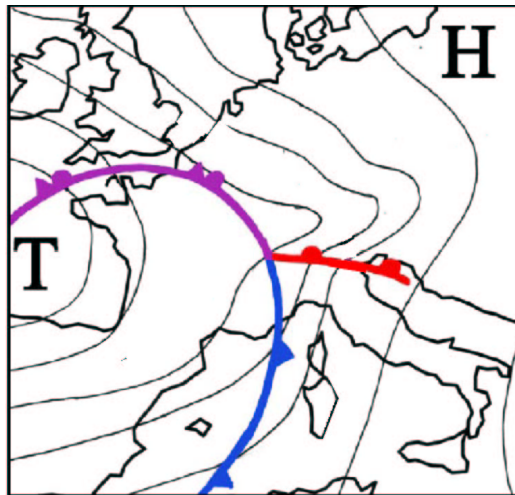


Abbildung 28

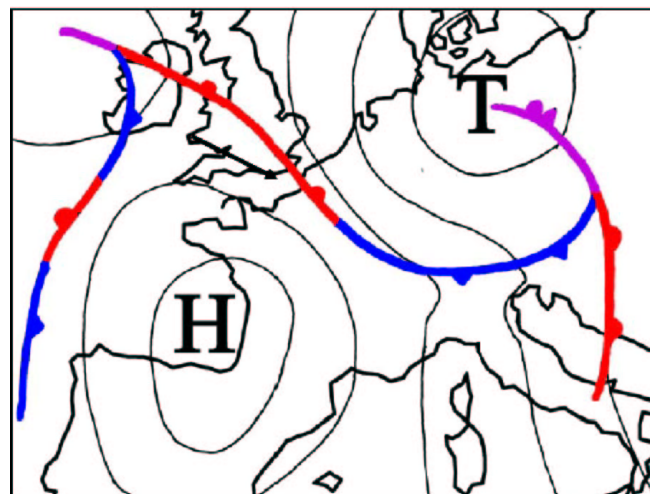


Abbildung 29

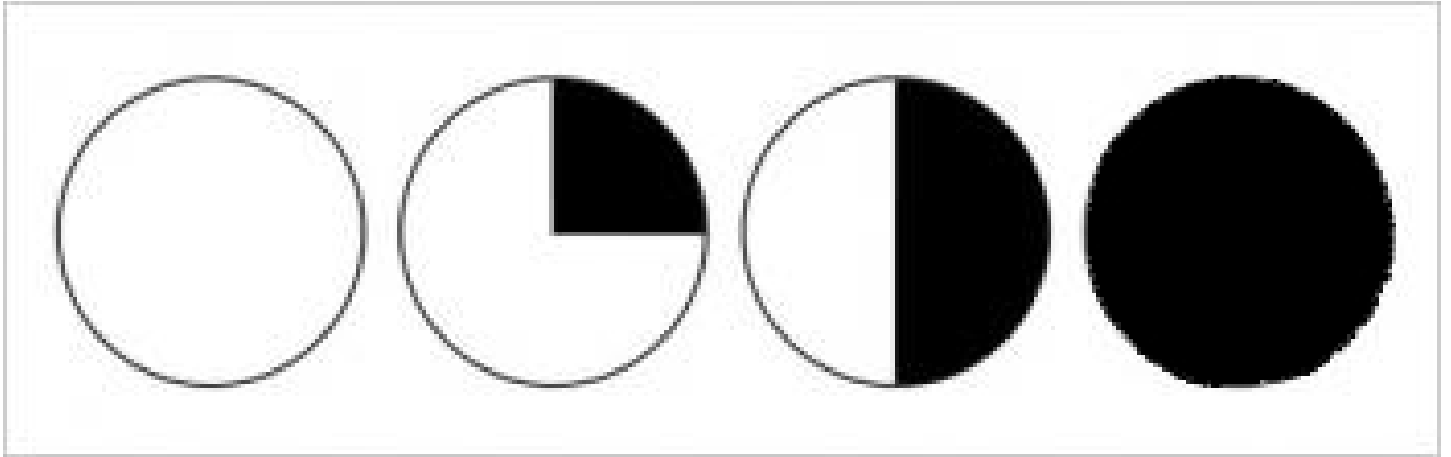


Abbildung 30

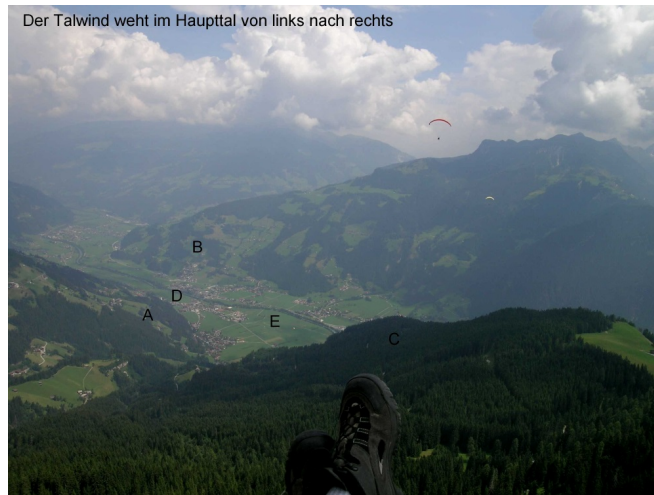


Abbildung 31



Abbildung 32



Abbildung 33



Abbildung 34

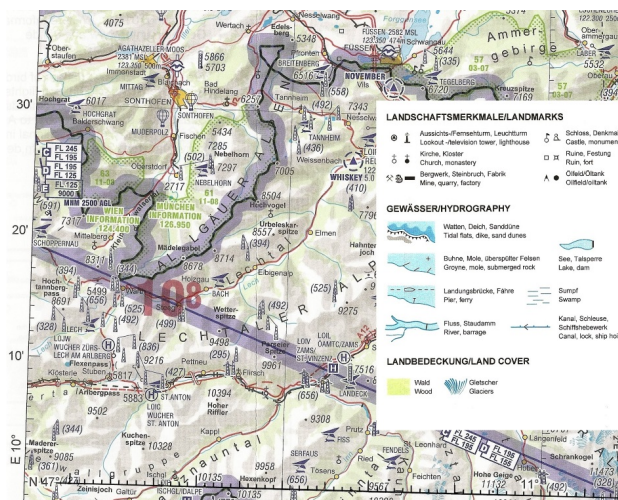


Abbildung 35

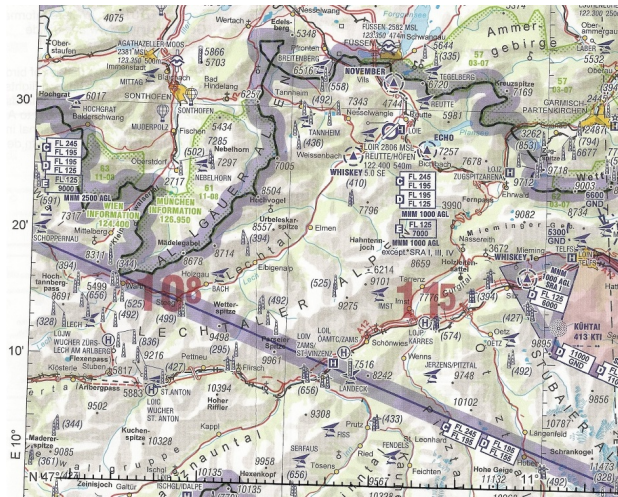


Abbildung 36

-  Flugplatz, geschlossen
Aerodrome, closed
-  Wasserlandeplatz
Water airfield
-  SAFFIG Hubschrauberlandeplatz Zivil bzw. Militär
Heliport civil resp. military
-  Hubschrauberlandeplatz für Krankentransp.
Heliport for ambulances
-  USLAR Segelfluggelände, Flugzeugschlepp
bzw. Windschlepp
Glider site aero-tow resp. winch launching
-  BERG Ultraleichtflug- bzw. Hängegleitergelände
Ultra light flying site resp. Hang glider site
-  CALW Fallschirmsprungzonen,
gelegentliche Fallschirmaktivitäten
(Betrieb über FIS oder INFO einholen)
Dropping zone, occasional dropping activities
(Contact FIS or INFO for activity)

Abbildung 37

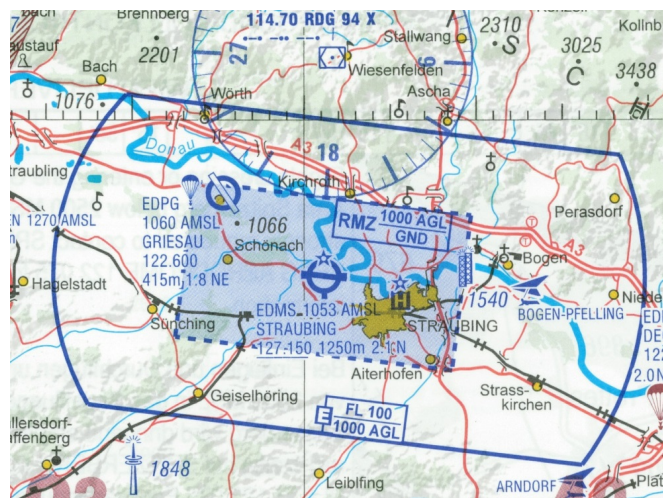


Abbildung 38

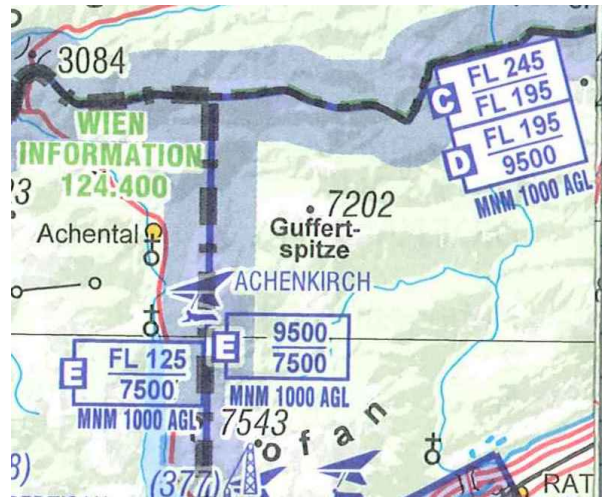


Abbildung 39

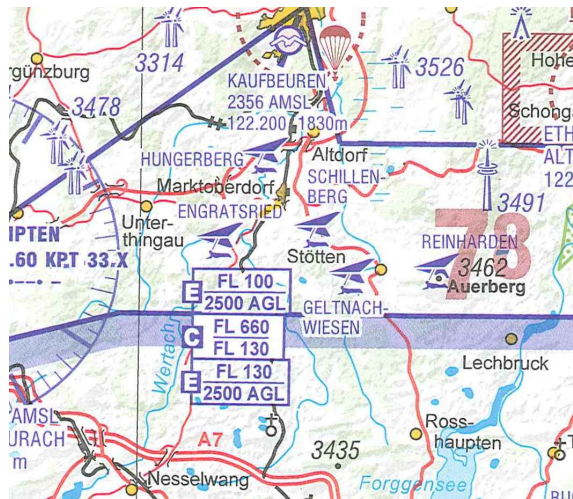


Abbildung 40

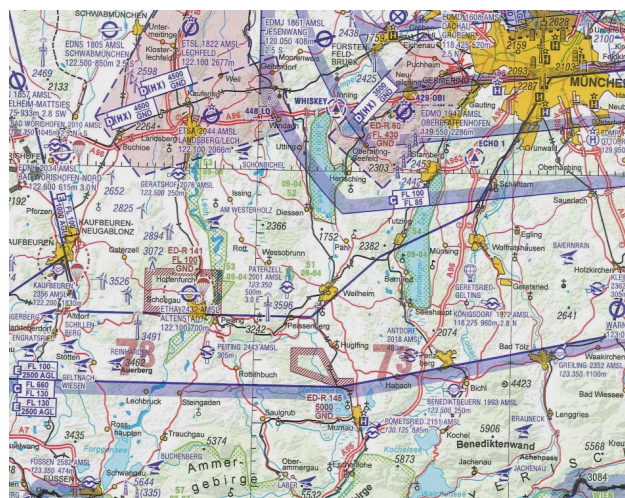


Abbildung 41

Föhnwinddiagramm Innsbruck

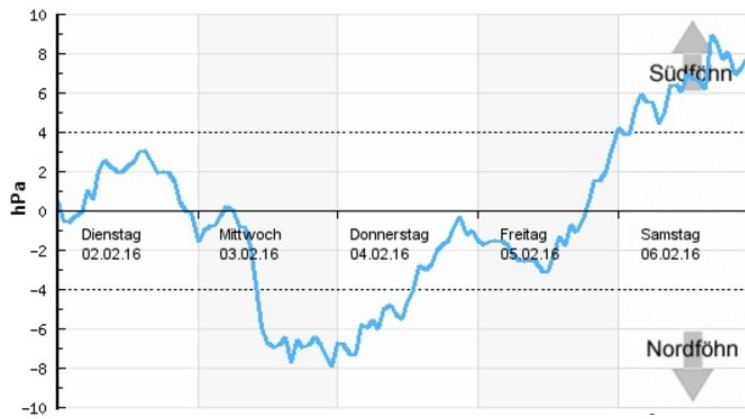


Abbildung 42

